

Analisi dei dati con Excel

Generalità su Office

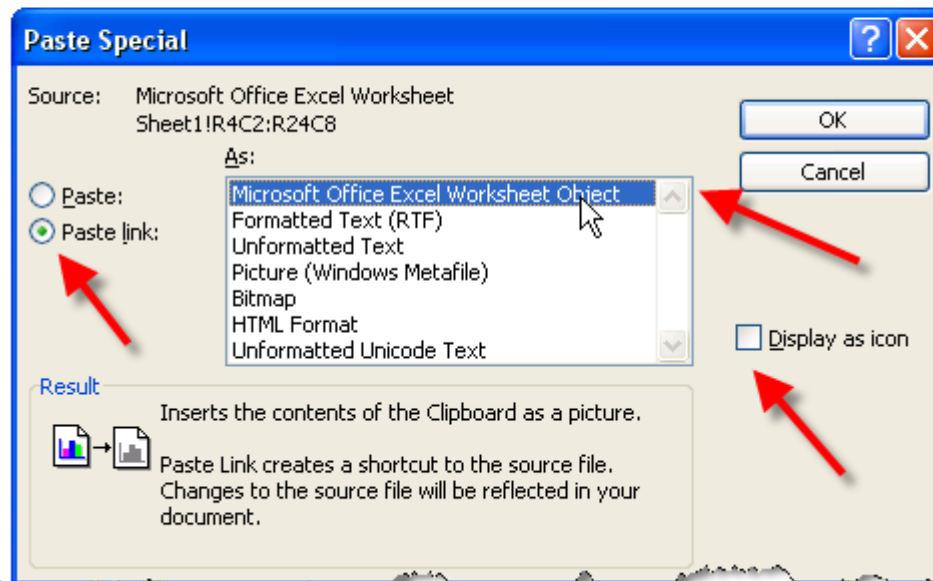
- Gli strumenti di uso comune sono ritagliati su specifiche esigenze, ma si ricoprono funzionalmente
 - Es. Scrivere testi con Excel o gestire tabelle in Word
- Le ricoperture devono essere usate quando la funzione “non è rilevante”
- “Ofelè fa il tò mestè” e cioè : panettiere fai il tuo mestiere.

Integrazione

- I vari strumenti permettono di integrare “pezzi” l’uno nell’altro
- Le integrazioni possono essere passive (immagini, testo, ... Ecc) oppure attive, con la possibilità di interagire e di aggiornare “un solo punto”

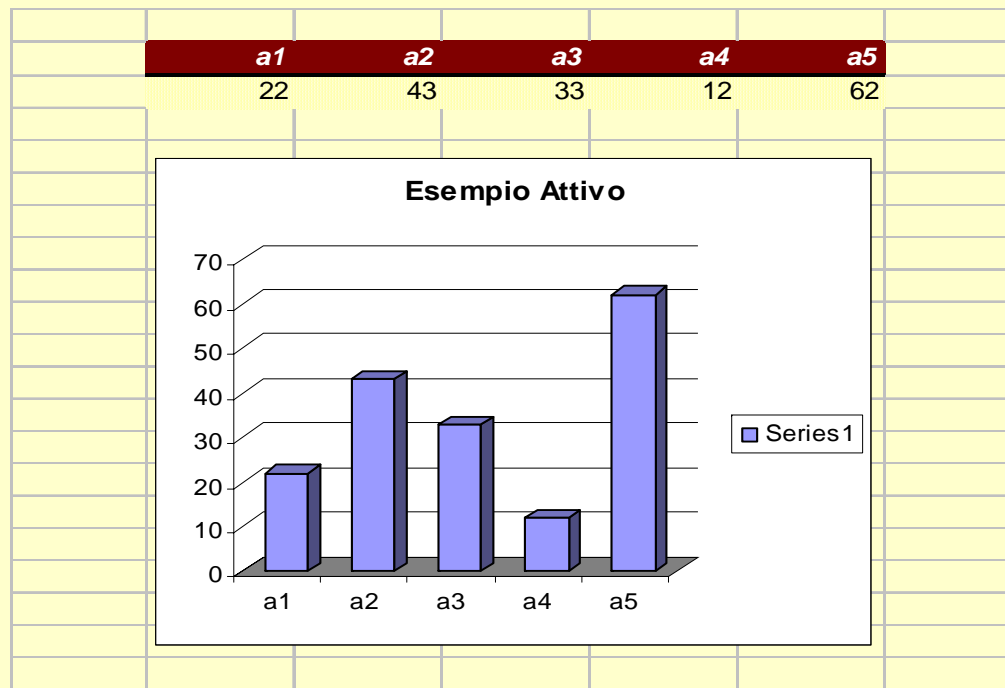
Link Attivo

Esempio di inserto attivo



Excel → Word → Power Point

Esempio di inserto attivo



I due documenti sono legati

Il foglio elettronico (gli inizi)

- **VisiCalc** è il primo foglio elettronico, creato da Dan Bricklin, un giovane studente della Harvard Business School. Il primo prototipo risale al 1978 (prima non esisteva nulla di simile!)



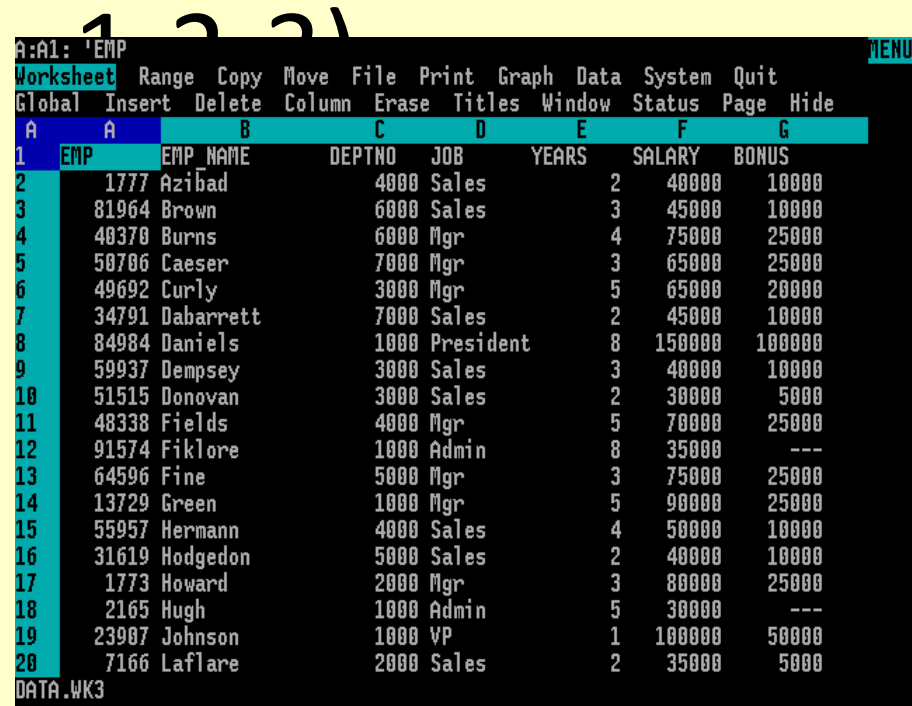
The screenshot shows the VisiCalc spreadsheet interface. The title bar at the top reads "C11 (L) TOTAL" and "C1 25". The spreadsheet has four columns labeled A, B, C, and D. The data is as follows:

	A	B	C	D
1	ITEM	NO.	UNIT	COST
2	MUCK RAKE	43	12.95	556.85
3	BUZZ CUT	15	6.75	101.25
4	TOE TONER	250	49.95	12487.50
5	EYE SNUFF	2	4.95	9.90
			SUBTOTAL	13155.50
			9.75% TAX	1282.66
			TOTAL	14438.16

- Dal suo germe nasceranno Supercalc, Lotus 1-2-3, Quattro, Multiplan, Excel

Il foglio elettronico (Lotus

- It was the IBM PC's first "killer application"; its huge popularity in the mid-1980s contributed significantly to the success of the IBM PC in the corporate environment
- The Lotus Development Corporation was founded by Mitchell Kapor, a friend of the developers of VisiCalc. 1-2-3 was originally written by Jonathan Sachs, who had written two spreadsheet programs previously while working at Concentric Data Systems, Inc.



A screenshot of the Lotus 1-2-3 spreadsheet interface. The window title is 'A:A1: 'EMP'. The menu bar includes 'Worksheet', 'Range', 'Copy', 'Move', 'File', 'Print', 'Graph', 'Data', 'System', and 'Quit'. The 'Global' menu is open, showing options: 'Insert', 'Delete', 'Column', 'Erase', 'Titles', 'Window', 'Status', 'Page', and 'Hide'. The spreadsheet grid shows columns A through G and rows 1 through 20. The data is as follows:

A	B	C	D	E	F	G	
1	EMP	EMP_NAME	DEPTNO	JOB	YEARS	SALARY	BONUS
2	1777	Azibad	4000	Sales	2	40000	10000
3	81964	Brown	6000	Sales	3	45000	10000
4	40370	Burns	6000	Mgr	4	75000	25000
5	50706	Caeser	7000	Mgr	3	65000	25000
6	49692	Curly	3000	Mgr	5	65000	20000
7	34791	Dabarrett	7000	Sales	2	45000	10000
8	84984	Daniels	1000	President	8	150000	100000
9	59937	Dempsey	3000	Sales	3	40000	10000
10	51515	Donovan	3000	Sales	2	30000	5000
11	48338	Fields	4000	Mgr	5	70000	25000
12	91574	Fiklore	1000	Admin	8	35000	---
13	64596	Fine	5000	Mgr	3	75000	25000
14	13729	Green	1000	Mgr	5	90000	25000
15	55957	Hermann	4000	Sales	4	50000	10000
16	31619	Hodgedon	5000	Sales	2	40000	10000
17	1773	Howard	2000	Mgr	3	80000	25000
18	2165	Hugh	1000	Admin	5	30000	---
19	23907	Johnson	1000	VP	1	100000	50000
20	7166	Laflore	2000	Sales	2	35000	5000

DATA.WK3

Lotus 1-2-3 was the very first computer software to use television consumer advertising. 1-2-3 was released on January 26, 1983, started outselling then-most-popular VisiCalc the very same year, and for a number of years was the leading spreadsheet for the DOS operating system.

Bill Gates “sostiene” Excel

E quindi Ora c'è solo Excel

oppure.... OpenOffice.org_Calc